



Test Report

NTS2401203R

Date:February 02, 2023

Page 1 of 8

Applicant : Jiangyin Uzone International Trade Co.,Ltd
Address : Rm.1006-1008,Zhifu Mansion,299#North Tongdu Rd.,Jiangyin Jiangsu China
Manufacturer : Jiangyin Uzone International Trade Co.,Ltd
Address : Rm.1006-1008,Zhifu Mansion,299#North Tongdu Rd.,Jiangyin Jiangsu China

The following sample(s) was/were submitted and identified on behalf of the clients as : Dark Violet Glass Bottles And Jars

Model No. : **UVG1202431**

Client Ref. Info.: UVG302434, UVG1002432, UVG502433, UVG602065, UVG301866, UVG151867, UVG101868, UVG20069, UVG10070, UVG5071, UVG3072, UVG5123, UVG5124

Trade mark: UZGC

Date of Sample Received : January 29, 2023
Testing Period : January 29, 2023 - February 02, 2023
Test Requested : Selected test(s) as requested by client.
Test Method : Please refer to next page(s).
Test Results : Please refer to next page(s).
Conclusion : Based on the performed tests on submitted sample(s), the results of Lead, Mercury, Cadmium, Hexavalent chromium, Polybrominated biphenyls (PBBs), Polybrominated diphenyl ethers (PBDEs), DEHP, BBP, DBP, DIBP comply with the limits as set RoHS Directive (EU) 2017/2102, (EU) 2015/863 and 2011/65/EU Annex II; recasting 2002/95/EC.

Signed for and on behalf of
Shenzhen NOWD Testing Services Co., Ltd.

Jeremy Xie

Jeremy Xie
Approved Signatory



Nowd Testing Services Co., Ltd
<http://www.nowd.com.cn>



Email: nowd@nowd.com.cn
Hotline: +86-755-27830065

This test report may be duplicated completely for legal use with the approval of the applicant. It should not be reproduced except in full, without the written approval of our laboratory. The test results in the report only apply to the tested sample.

Restriction of Hazardous Substances Directive (RoHS), (EU) 2015/863 & 2011/65/EU

List of Analytes and their Corresponding Test Methods [European Council Directive (EU) 2015/863 & 2011/65/EU] :

Name of Analytes		Test Method(s)
Pb	Lead (Pb)	With reference to EN 62321-5: 2014; by ICP-OES.
Cd	Cadmium (Cd)	
Hg	Mercury (Hg)	With reference to EN 62321-4: 2014; by ICP-OES.
Cr⁶⁺	Chromium VI (Cr VI)	<u>Metal</u> : With reference to EN 62321-7-1: 2015. <u>Polymers & Electronics</u> : With reference to EN 62321-7-2: 2017. using UV-Vis.
PBBs	Polybrominated Biphenyls (Sum of PBBs)	With reference to EN 62321-6: 2015, by GC-MS.
	Bromobiphenyls	
	Dibromobiphenyls	
	Tribromobiphenyls	
	Tetrabromobiphenyls	
	Pentabromobiphenyls	
	Hexabromobiphenyls	
	Heptabromobiphenyls	
	Octabromobiphenyls	
	Nonabromobiphenyls	
	Decabromobiphenyl	
PBDEs	Polybrominated Diphenyl Ethers (Sum of PBDEs)	
	Bromodiphenyl ethers	
	Dibromodiphenyl ethers	
	Tribromodiphenyl ethers	
	Tetrabromodiphenyl ethers	
	Pentabromodiphenyl ethers	
	Hexabromodiphenyl ethers	
	Heptabromodiphenyl ethers	
	Octabromodiphenyl ethers	
	Nonabromodiphenyl ethers	
Decabromodiphenyl ether		

List of Analytes and their Corresponding Test Methods [European Council Directive (EU) 2015/863 & 2011/65/EU] :

Name of Analytes		Test Method(s)
Phthalate	Bis-(2-ethylhexyl) Phthalate (DEHP)	With reference to EN 62321-8: 2017. by GC-MS
	Benzylbutyl Phthalate (BBP)	
	Dibutyl Phthalate (DBP)	
	Diisobutyl phthalate (DIBP)	



NOWD



TEST RESULT

No.	TEST ITEMS		Lead (Pb)	Cadmium (Cd)	Mercury (Hg)	Hexavalent Chromium (Cr ⁶⁺)	PBBs	PBDEs
	UNIT		ppm	ppm	ppm	ppm	ppm	ppm
	Limit		1000	100	1000	1000	1000	1000
001	Bottle	Dark Violet Glass	N.D.	N.D.	N.D.	N.D.	N.D.	N.D.

Notes :

(1) The maximum permissible limit is quoted from the directive 2011/65/EU, Annex II

Remarks :

- (1) 1 mg/kg = 1 ppm = 0.0001%
- (2) MDL = Method Detection Limit
- (3) ND = Not Detected (< MDL)
- (4) "--" = Not Regulated

**NOWD**

No.	TEST ITEMS		Bis-(2-ethylhexyl) Phthalate (DEHP)	Benzylbutyl Phthalate (BBP)	Dibutyl Phthalate (DBP)	Diisobutyl phthalate (DIBP)
	UNIT		ppm	ppm	ppm	ppm
	Limit		1000	1000	1000	1000
001	Bottle	Dark Violet Glass	N.D.	N.D.	N.D.	N.D.

Notes :

(1) The maximum permissible limit is quoted from the directive (EU) 2015/863, Annex II

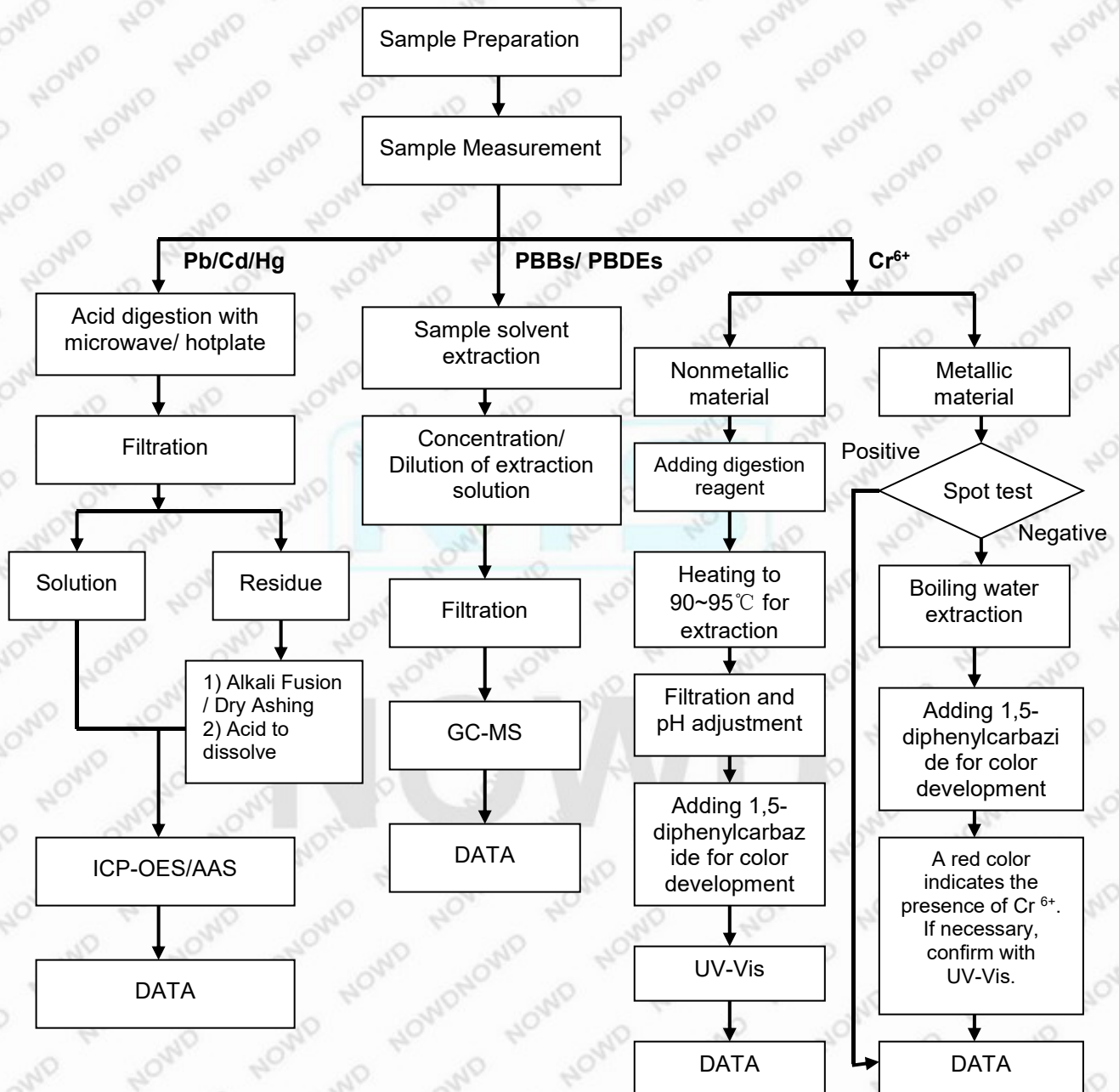
Remarks :

- (1) 1 mg/kg = 1 ppm = 0.0001%
- (2) MDL = Method Detection Limit
- (3) ND = Not Detected (< MDL)
- (4) "-" = Not Regulated

**NOWD**

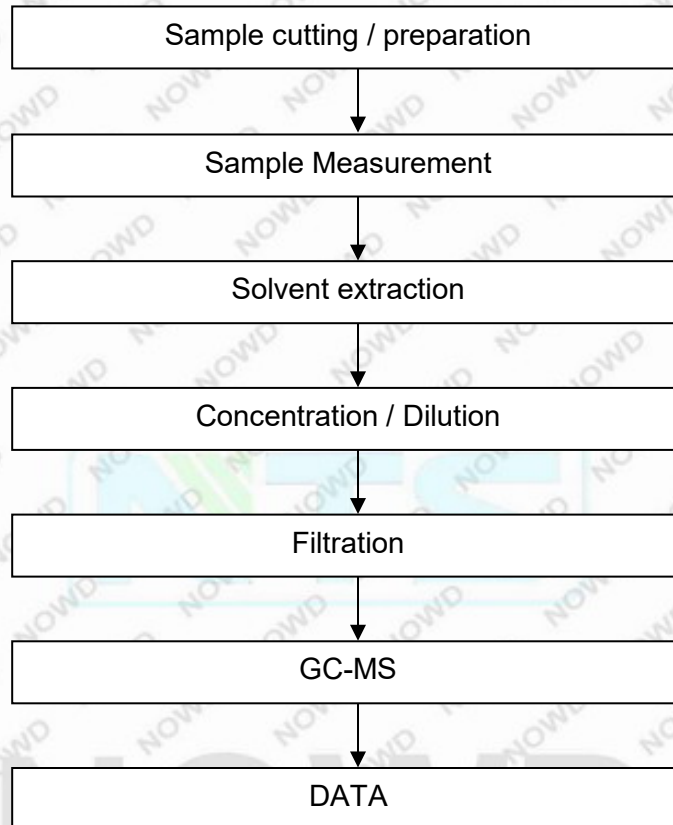
RoHS Testing Flow Chart

- 1) Name of the person who made testing: Susan Yu
- 2) Name of the person in charge of testing: David Chou
- 3) These samples were dissolved totally by pre-conditioning method according to below flow chart (Cr6+ and PBBs/ PBDEs test method excluded).

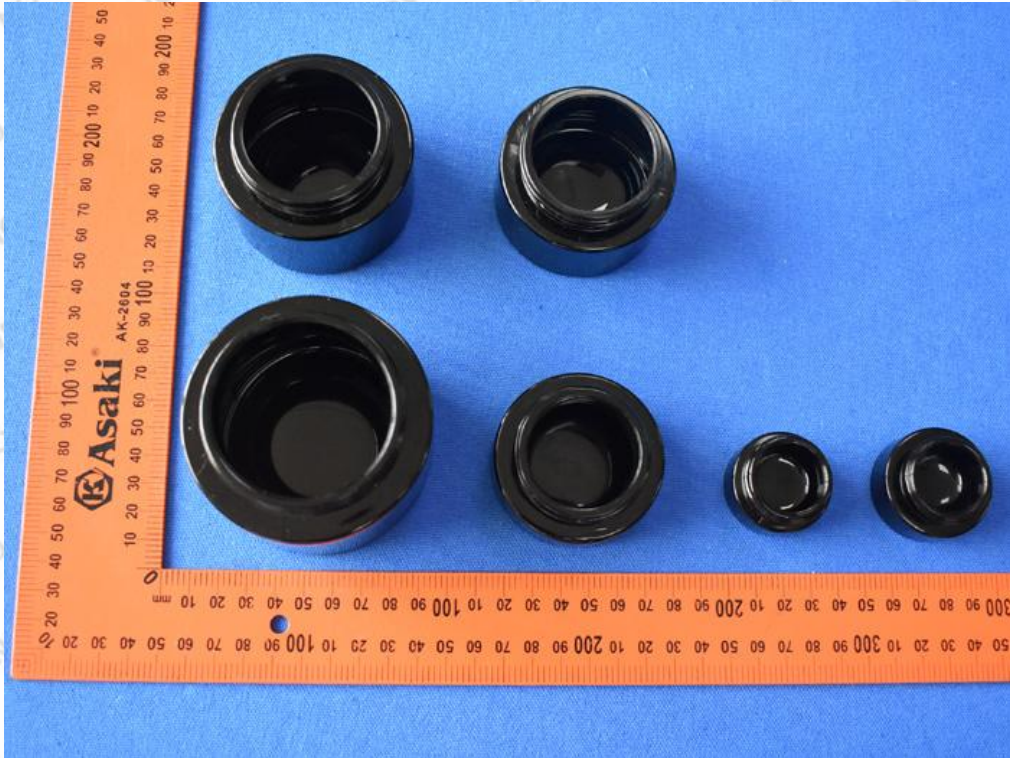


Phthalates Testing Flow Chart

- 1) Name of the person who made testing: Susan Yu
- 2) Name of the person in charge of testing: David Chou



Photos



-- End of Report --

